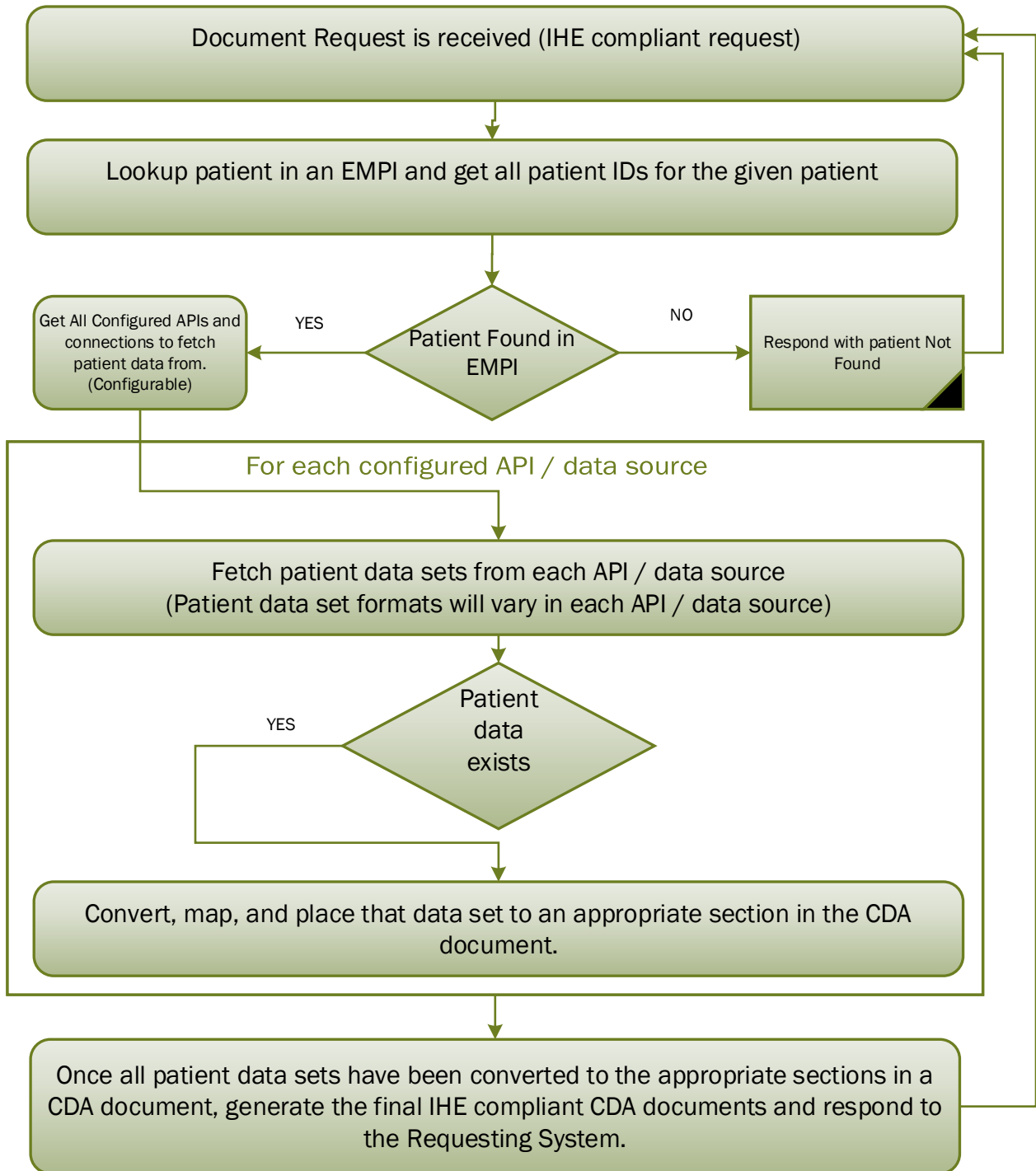


ON DEMAND DOCUMENT CREATOR FLOW



NOTE:

- API / data source will return discrete patient data in JSON, XML or other data formats and not CDA formatted documents.
- API / data source is not a document repository. We are looking for a solution that can take patient data in multiple formats and standards and generate a CDA document from it.
- The generated CDA document will have to pass the content-testing with eHealth Exchange and be compliant with Carequality CDA documents.

Each Step is tracked.