



CRISP

CRISP Reporting Services Training guide

Ajay Gollapalli

7160 Columbia Gateway Drive, Suite. 230
Columbia, MD 21046
877.952.7477 | info@crisphealth.org
www.crisphealth.org



Agenda

1. Introduction
2. Landing Page
3. Pre/Post report
 1. Summary
 2. Analysis Chart
 3. Distribution of Visit and Charges
 4. Overall Trends and Analysis
4. Questions





Landing Page



Link to launch CRS Application

New Cards are added for future usage





Pre/Post - Summary



Connecting Providers with Technology to Improve Patient Care

CRISP REPORTING SERVICES

Gollapalli, Ajay | Logout

Summary Overall Trends Analysis Distribution of Charges and Vi... Relative Trend Analysis

Pre/Post Analysis - Summary

The analysis is based on discharges before and after enrollment date

Chronic Condition Operator
 AND
 OR

Chronic Conditions

- All Patients
- All Patients
- No Chronic Condition
- Any Chronic Condition
- Alzheimers
- Anemia
- Asthma
- Atrial Fibrillation
- Bipolar Disorder
- Breast Cancer
- Colorectal Cancer
- COPD
- Depressive Disorder
- Diabetes
- Endometrial Cancer
- Heart Failure
- Pelvic Fracture
- HIV/AIDS
- Hyperlipidemia
- Hypertension
- Ischemic Heart Disease
- Kidney Disease
- Lung Cancer
- MS Transverse Myelitis
- Obesity
- Osteoporosis
- Prostate Cancer
- Schizophrenia
- Stroke TIA
- Tobacco Use

Program Name

- Bread for the City
- Bread for the City
- Children's National Medical Center
- Community of Hope
- Family and Medical Counseling Service
- Howard University Family Practice
- La Clinica del Pueblo
- Mary's Center
- Medical Faculty Associates (GW)
- Medical Home Development Group
- Providence
- Unity
- Whitman Walker

Total Number of Members on Panel that can Contribute to the Analysis

	1 Month	3 Months	6 Months	12 Months
	13,451	21,352	24,597	28,071

Rate of Visits per 10 Members

Time Period	Total Number of Visits - Pre	Total Number of Visits - Post	Rate of Visits per 10 patients - Pre	Rate of Visits per 10 patients - Post	Visits Rate Change
1 Month	20,675	16,264	15.37	12.09	-3.28
3 Months	57,692	46,494	27.02	21.78	-5.24
6 Months	113,180	50,034	46.01	20.34	-25.67
12 Months	225,232	50,037	86.24	17.83	-68.41

Average Charges per Visit

Time Period	Total Number of Visits - Pre	Total Number of Visits - Post	Total Charges - Pre	Total Charges - Post	Average Charge per Visit - Pre	Average Charge per Visit - Post	Change in Average Charges per Visit
1 Month	20,675	16,264	23,335,479	13,260,840	\$1,128.68	\$811.39	-\$487
3 Months	57,692	46,494	63,553,455	44,935,824	\$1,101.60	\$778.89	-\$323
6 Months	113,180	50,034	117,421,013	49,188,917	\$1,037.47	\$434.61	-\$603
12 Months	225,232	50,037	236,242,728	49,188,917	\$1,048.89	\$218.39	-\$830

Percent of

Time Period	Total Number of Patients with at least 1 Visit
1 Month	9,451
3 Months	16,352
6 Months	22,597
12 Months	27,071

Time Period	Total Number of Patients with at least 1 visit
1 Month	13,451
3 Months	21,352
6 Months	24,597
12 Months	28,071

Pre and Post Analysis of visits & charges based on program enrollment date over time period
Helps to analyze effectiveness of program

Patients in the panel over time period

% of members on the panel with 1 or more visits

Average charges per member

Rate of Visits per 10 members

Average charges per Visit



Pre/Post analysis of Visit and Charges

Summary Overall Trends Analysis Distribution of Charges and Vi... Relative Trend Analysis

Pre/Post Analysis

Analysis of 3 Months of Visits Before and After then Enrollment Date

This analysis is based on discharges before and after the enrollment date. Please select the number of months to be used on the analysis. Depending on the number of months selected, some participants might not be included in the analysis, if they do not have data for the entire period before and after the analysis. Number of members with data for the analysis shows, the number of members that are included in the report for a given selection.

Visit Trend

Visit Trend analysis pre/post time period

Charges Trend

Number of Days from Enrollment

Total Number of Members
21,352

Number of Members with Data for Analysis
21,352

Number of Members with Visits during Analysis Period
21,352

Program Name
(All)

Time Period
 1 Month
 3 Months
 6 Months
 12 Months

Chronic Conditions
All Patients

N/A

N/A

CC Operator
 AND
 OR

Select Time Period

Total patients selected based on time period



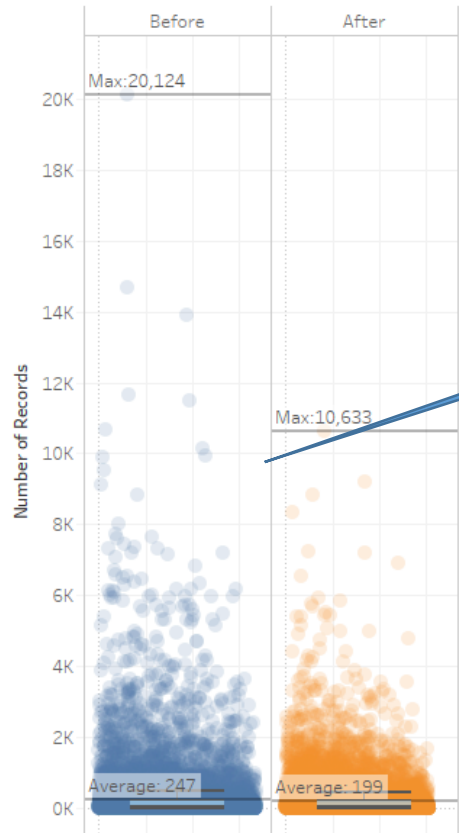
Distribution of Visits and charges

Summary Overall Trends Analysis Distribution of Charges and Vi... Relative Trend Analysis

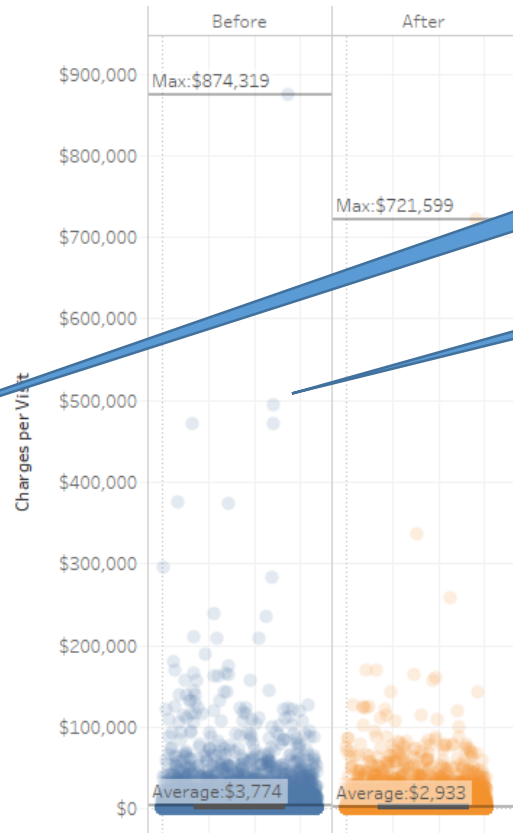
Pre/Post Analysis Analysis of 3 Months of Visits Before and After then Enrollment Date

This analysis is based on discharges before and after the enrollment date. Please select the number of months to be used on the analysis. Depending on the number of months selected, some participants might not be included in the analysis, if they do not have data for the entire period before and after the analysis. Number of members with data for the analysis shows, the number of members that are included in the report for a given selection.

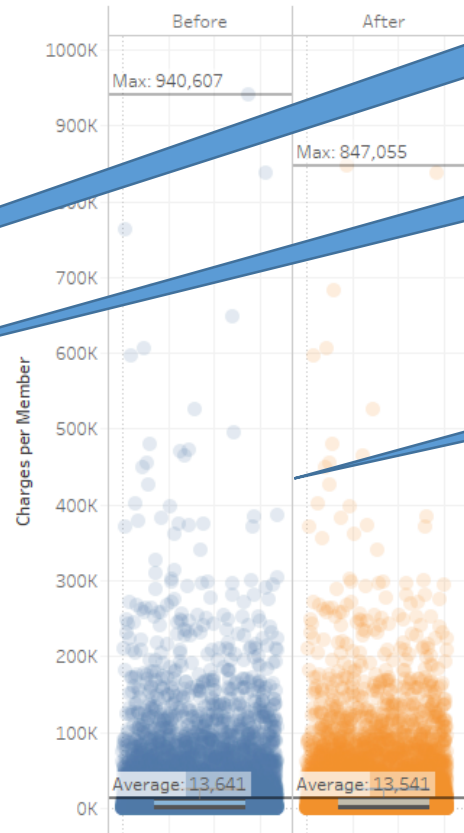
Visits Per Member



Charges per Visit



Charges per Member



Filter Conditions

Program Name
(All)

Time Period
 1 Month
 3 Months
 6 Months
 12 Months

Filter Conditions
All Patients

N/A

N/A

CC Operator
 AND
 OR

Distribution of Visits per member

Distribution of charges per visit

Distribution of charges per member



Relative Trend Analysis



Connecting **Providers with Technology** to Improve Patient Care

CRISP REPORTING SERVICES

Gollapalli, Ajay Logout

Summary Overall Trends Analysis Distribution of Charges and Vi... Relative Trend Analysis

Pre/Post Analysis Analysis of 12 Months of Visits Before and After then Enrollment Date

This analysis is based on discharges before and after the enrollment date. Please select the number of months to be used on the analysis. Depending on the number of months selected, some participants might not be included in the analysis, if they do not have data for the entire period before and after the analysis. Number of members with data for the analysis shows, the number of members that are included in the report for a given selection.

Program Name
(Multiple values)

- 1 Month
- 3 Months
- 6 Months
- 12 Months

Chronic Conditions
All Patients

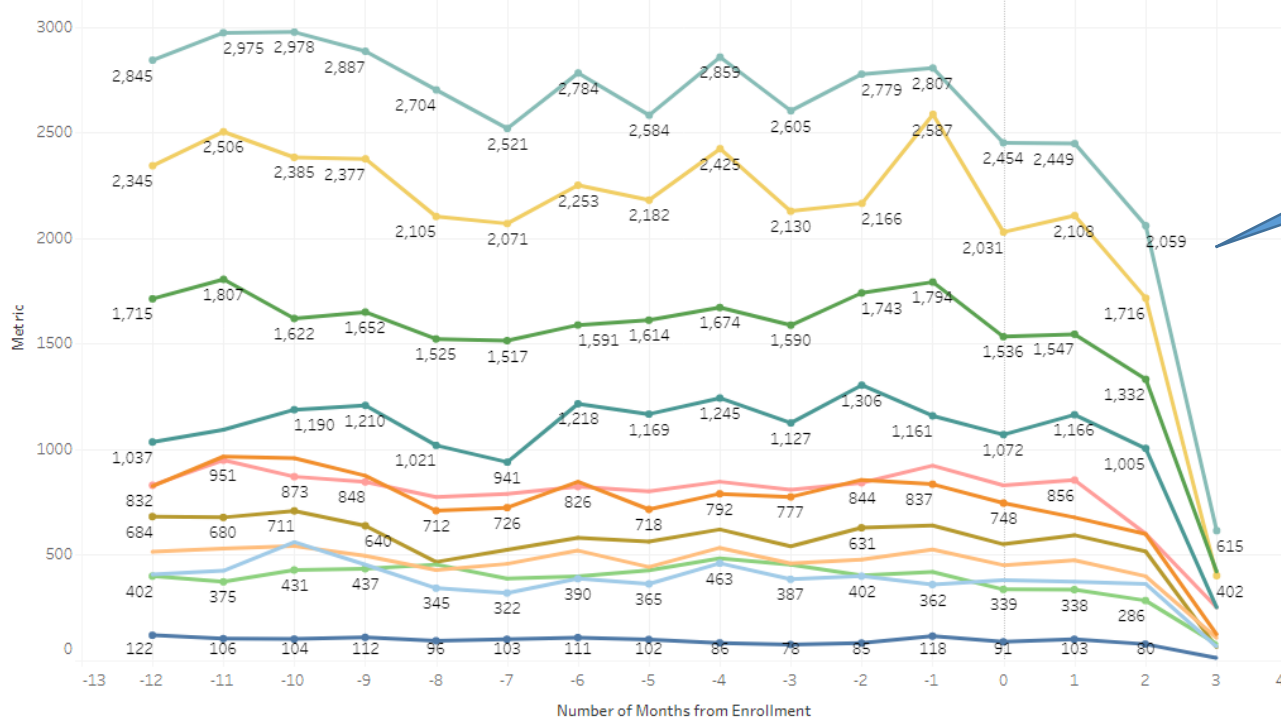
N/A

Chronic Condition Operator
 AND
 OR

Metric
 Visits
 Charges

- Program Name
- Bread for the City
 - Children's National ...
 - Community of Hope
 - Family and Medical C...
 - Howard University F...
 - La Clinica del Pueblo
 - Mary's Center
 - Medical Faculty Asso...
 - Medical Home Devel...
 - Providence
 - Whitman Walker

Relative Trend



Relative trend of charges & visits pre and post enrollment across programs



Questions ?